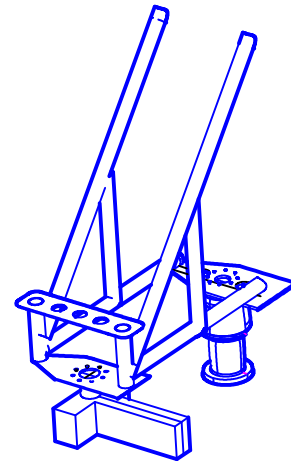
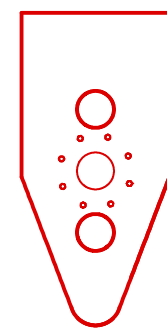


Technical drawing of a mechanical part, likely a bracket or support. The drawing shows a side view with dimensions 360 and 1330. The part has a red outline on the left and a blue outline on the right. It features a central horizontal slot and a vertical slot on the right side.

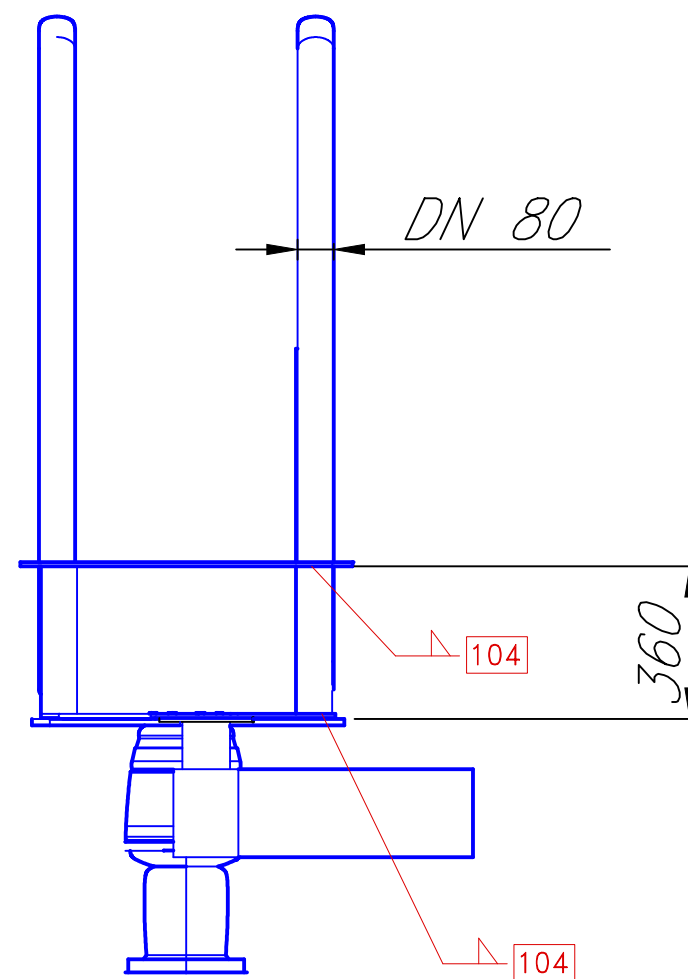


Technical drawing of a crane hook assembly. The drawing shows a side view of the hook and its supporting structure. Key dimensions are indicated:

- A vertical dimension of 790 is shown on the left side.
- A horizontal dimension of 1250 is shown at the bottom.
- A diagonal dimension of 2010 is shown along the length of the hook.
- A dimension of $Dn80$ is indicated near the base of the hook.

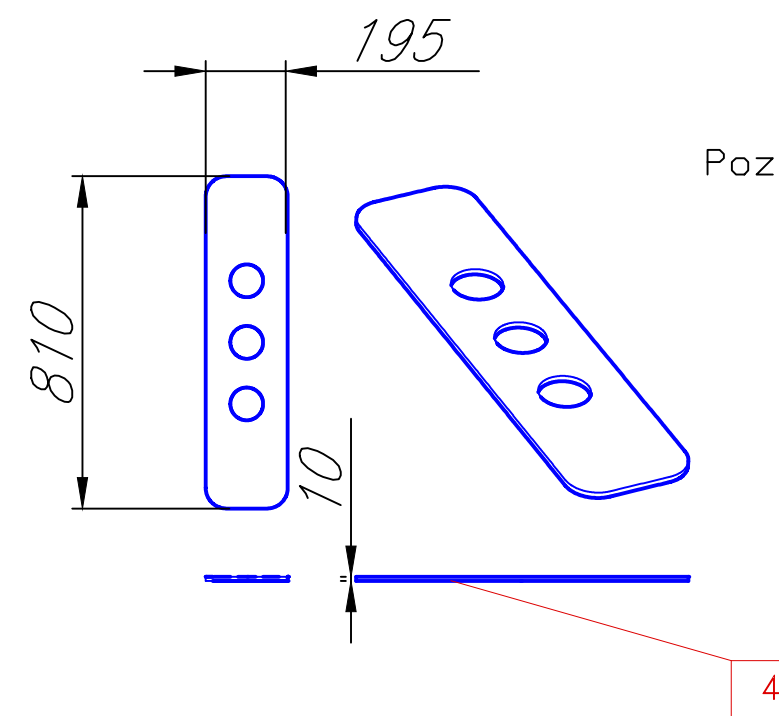


Widok Wzdłużny

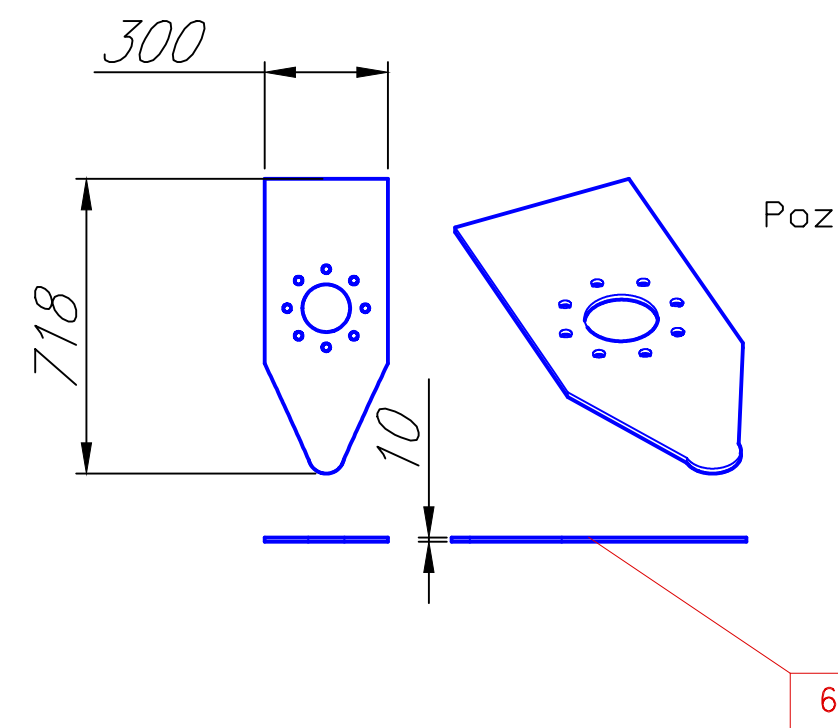


Technical drawings of a mechanical part. The top left shows a side view of a vertical component with four circular features. The top right shows a perspective view of a similar component. The bottom shows a cross-sectional view of a rectangular part with a central cavity, labeled with dimensions 360 and 4, and numbered 5 and 6.

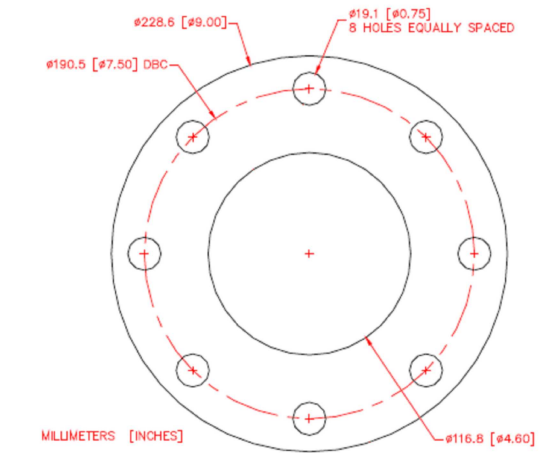
Poz 4



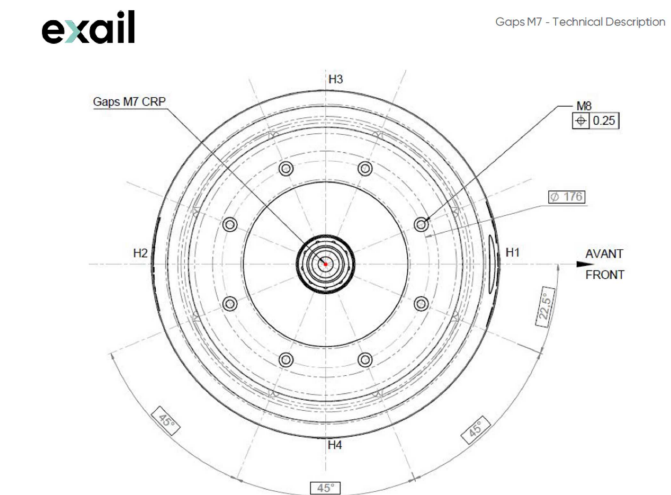
Poz 6




Aranżacja Otworów dla Poz A



Aranżacja Otworów dla Poz B



Rew	Data	Opis					
HIGH-FLIER		Zapjektowano AF	Zatwierdzono data 26.06.2025	Data 26.06.2025	Object	IMOR	
		Nazwa	FIZ Gaps 7@Sonic 100_02		Rysunek 100_02		
				Format i skala A3	Rew 0	Arkusz 1/1	